



MARATHWADA MITRAMANDAL COLLEGE OF ARCHITECTURE, PUNE

FINAL YEAR ARCHITECTURAL DESIGN PROJECT (THESIS)

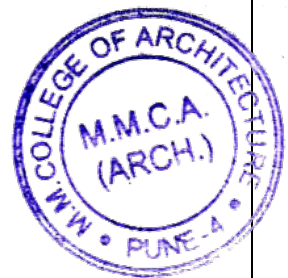
ON

INNOVATION CENTER at Mumbai

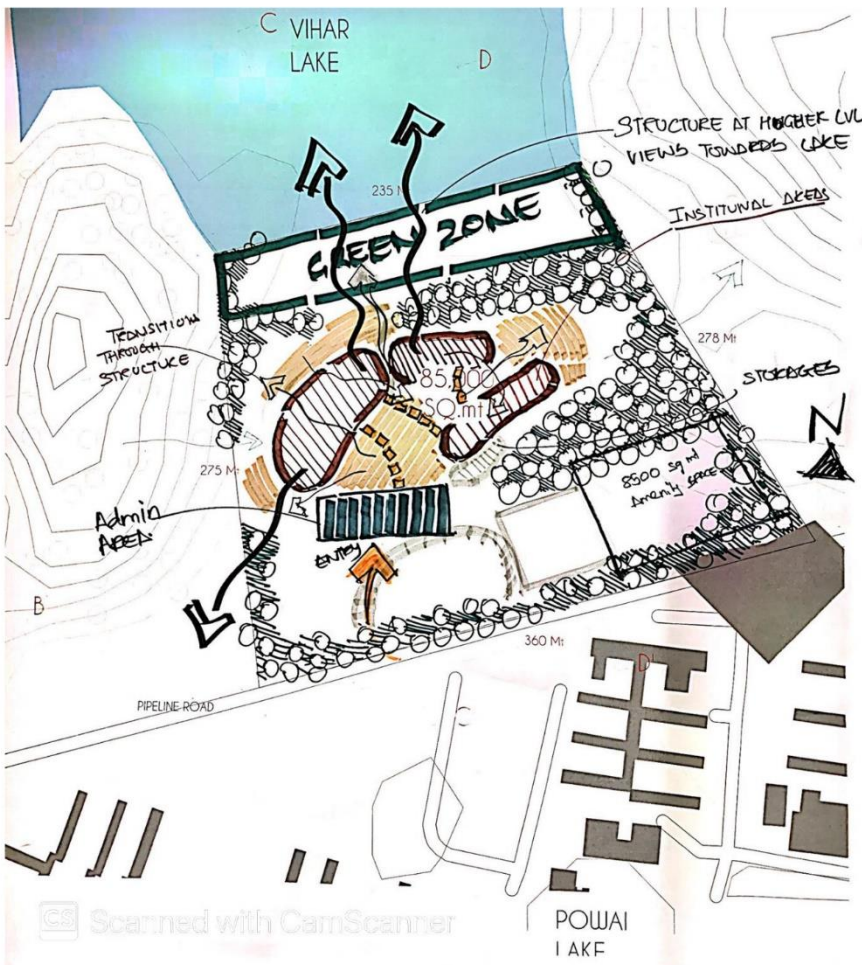
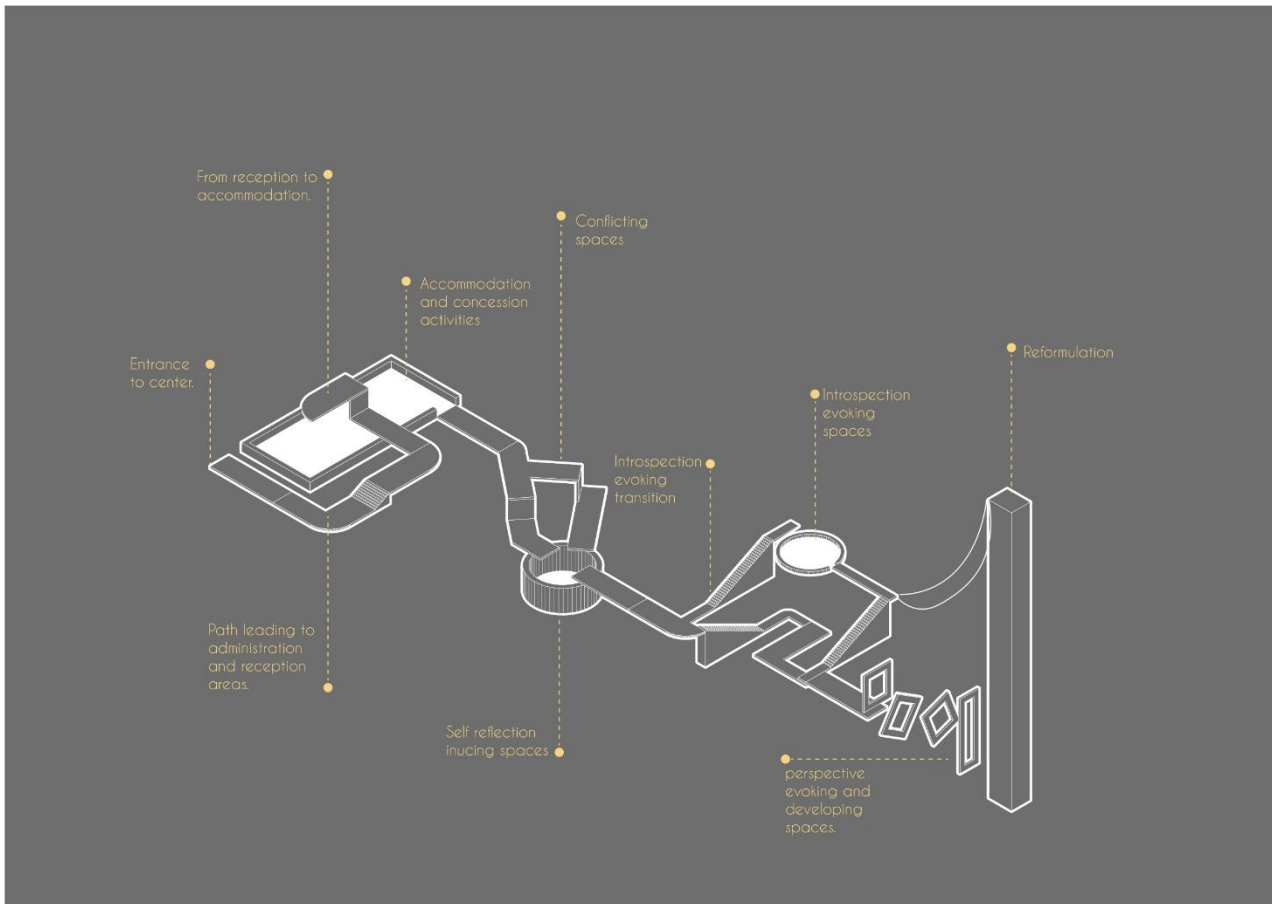
BY

Tilak Tanay Abhiram
(FINAL YEAR B.ARCH. 2020-2021)

UNDER THE GUIDANCE OF
Prof. Sunil Kulkarni



SAVITRIBAI PHULE PUNE UNIVERSITY

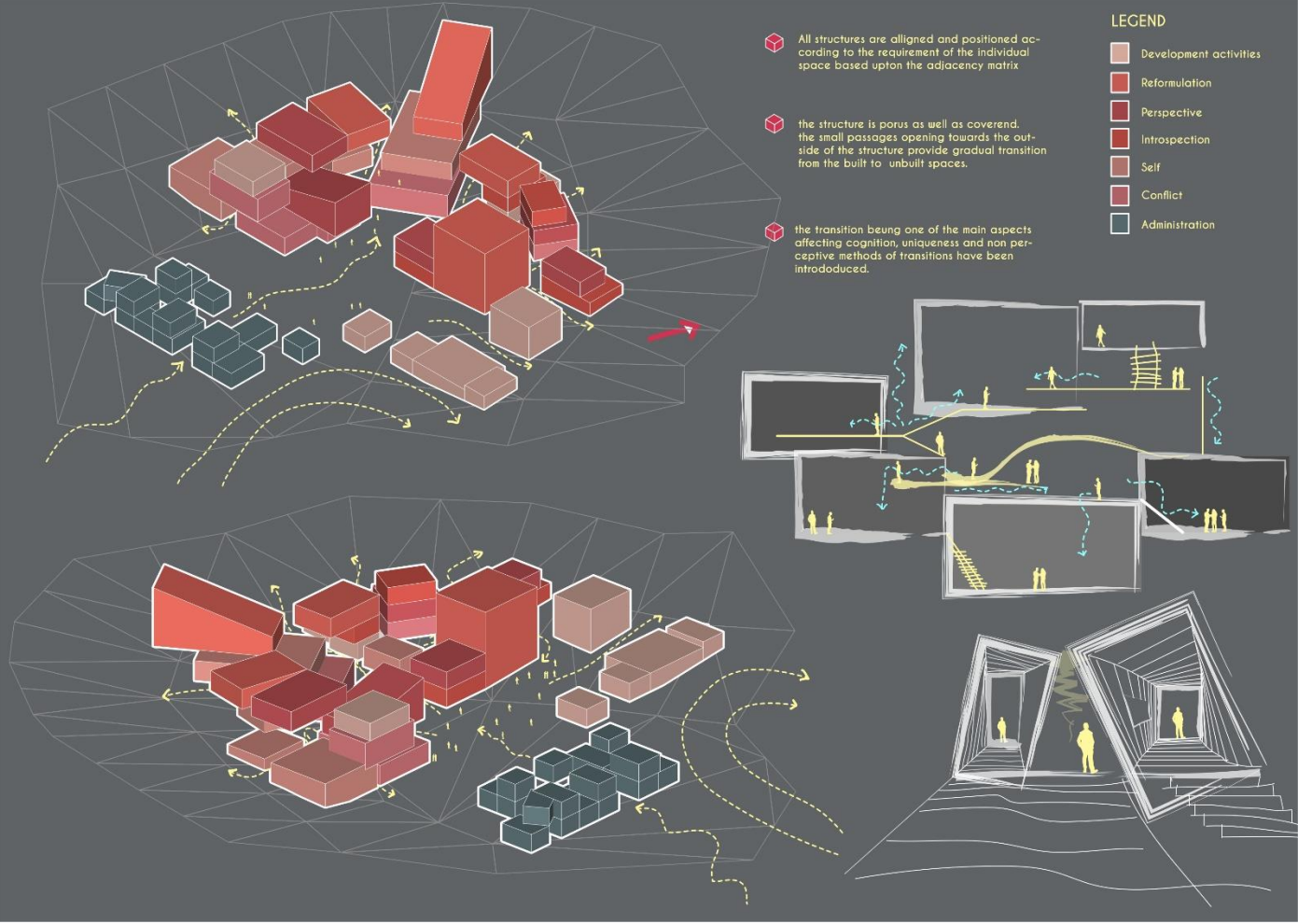


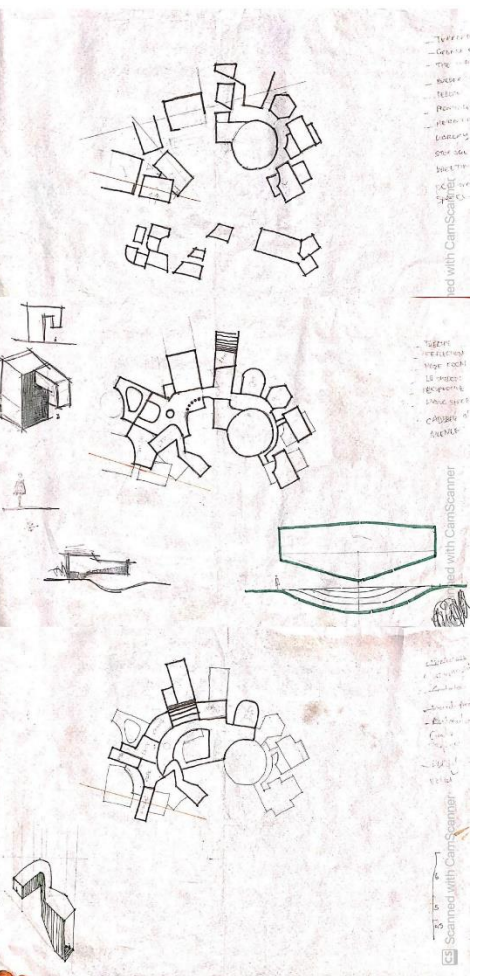
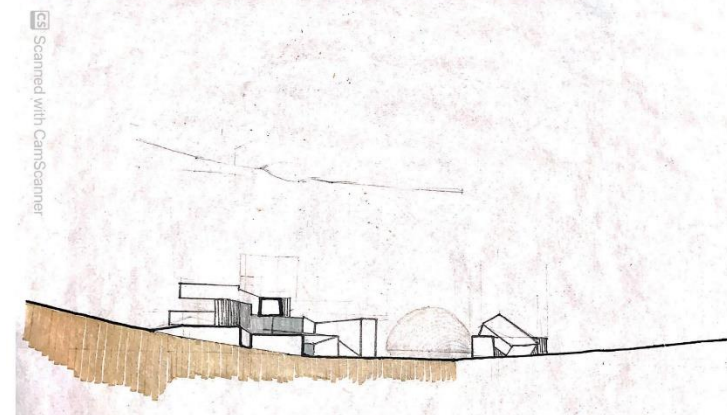
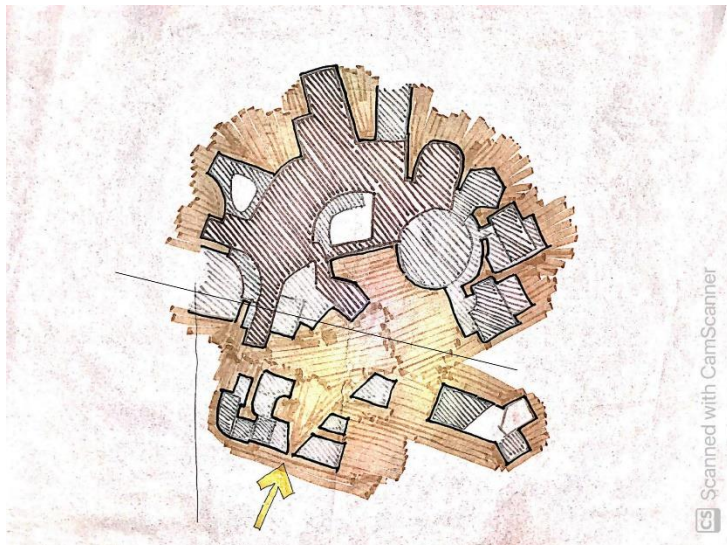
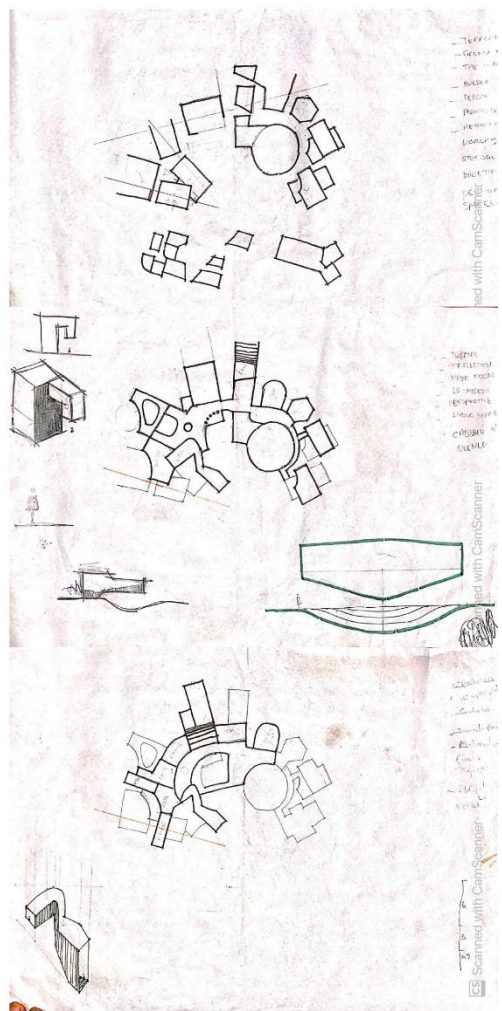
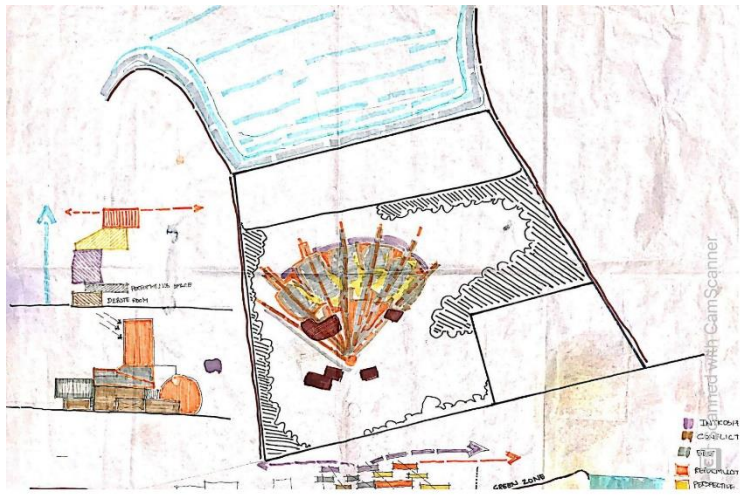
PRILIMINARY ZONING SKETCH

- Formation of smaller transition areas opening up into larger plazas.
- Formation of quadrangles.
- Using western side of site for activities related to bodily intelligence.
- Administration and storage area located on the southern part of the site near the 8m access road.
- Amenity space provided at the south-western part of the site.
- Northern part of the site having taller structures acquiring desired effect from vistas and views overlooking lake.

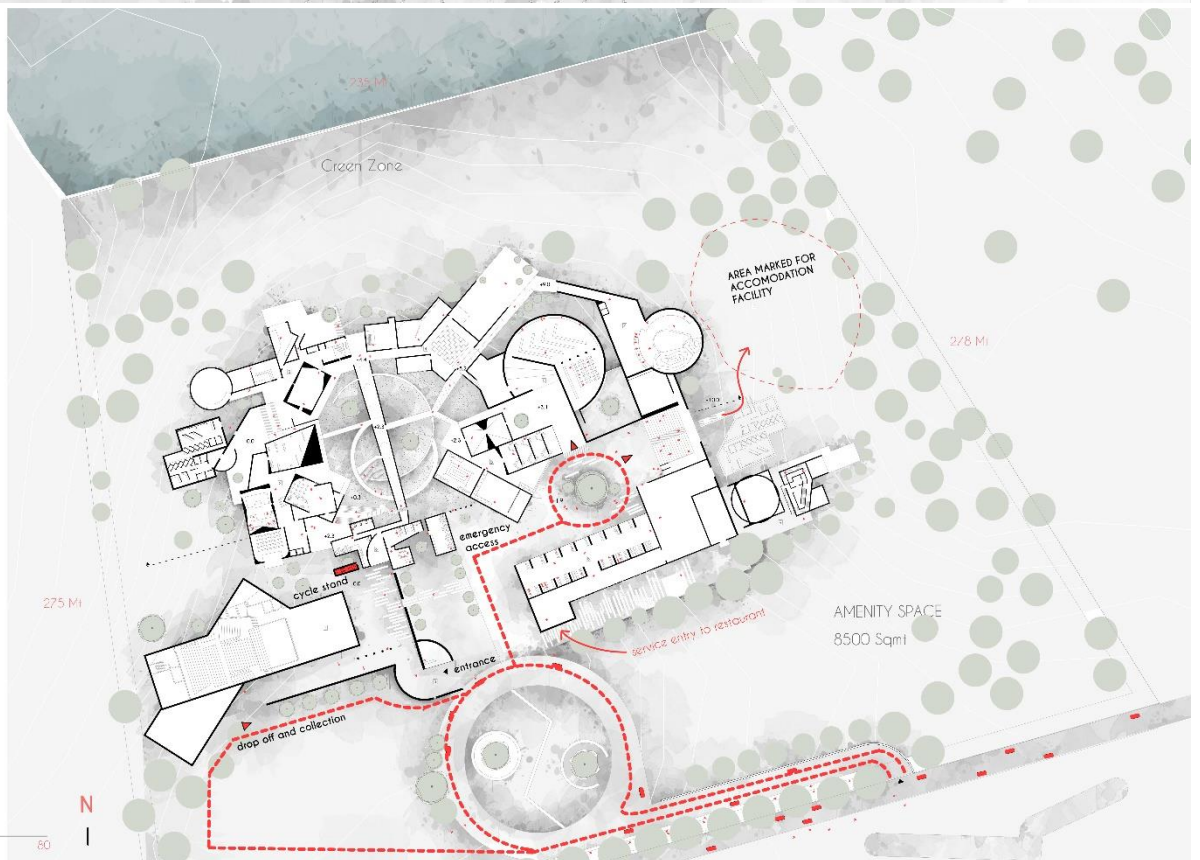
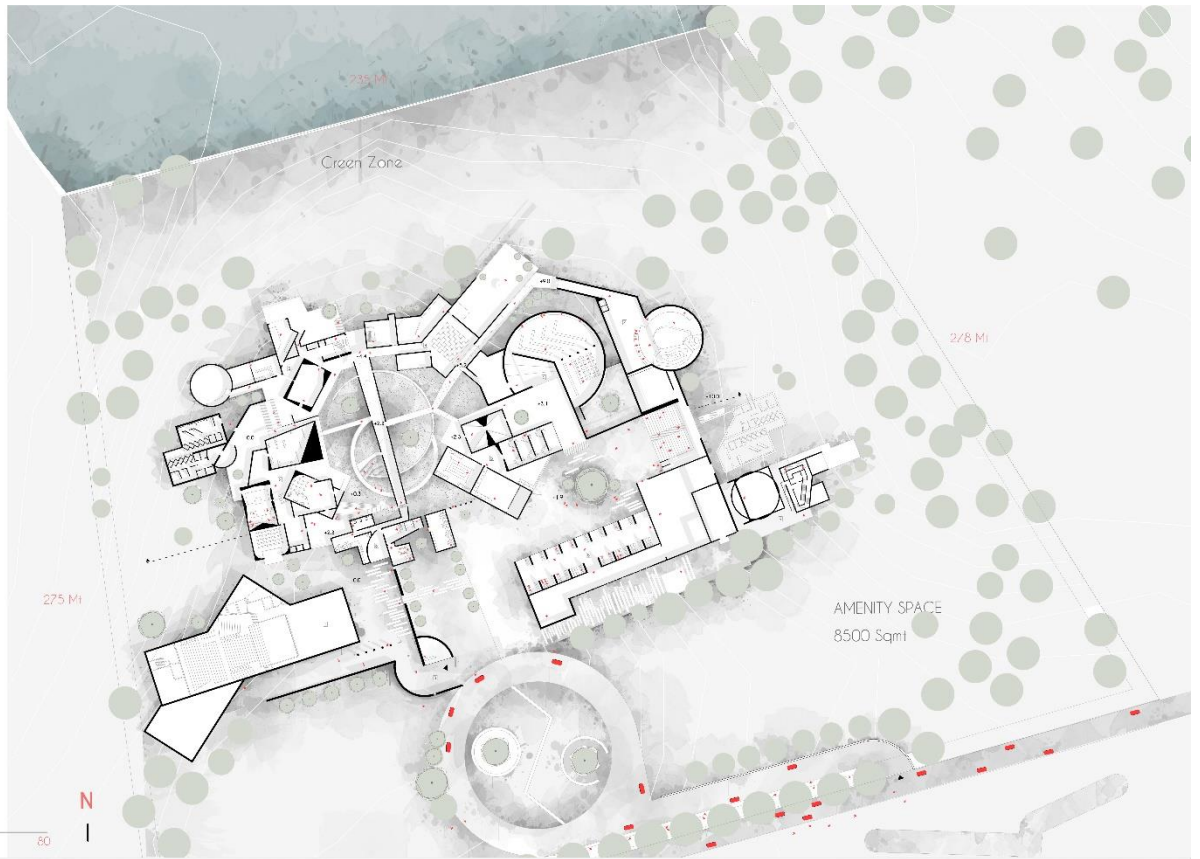
Scanned with CamScanner

SPACES	ASPECTS				LOCATION	VIEWS & VISTAS	PUBLIC ACCESS	EXCEPTIONS	LEGENDS
	HEIGHT (M)	DAYLIGHT	SOUND						
ADMINISTRATION AREAS	4.5	NS	NS	NEAR ENTRANCE	NS	Y	NS	CONFLICT ● ● ● ● ● ● ● ● ● ● SELF ○ ○ ○ ○ ○ ○ ○ ○ ○ ○ INTROSPECTION ● ● ● ● ● ● ● ● ● ● PERSPECTIVE ● ● ● ● ● ● ● ● ● ● REFORMULATION ● ● ● ● ● ● ● ● ● ● MULTIPLE INTELLIGENCES VISUAL / SPATIAL ● VERBAL / LINGUISTIC ● BODILY / KINESTHETIC ● MATHEMATICAL / LOGICAL ● INTRAPERSONAL INTELLIGENCE ● INTERPERSONAL INTELLIGENCE ● NATURALIST ● MUSICAL / RHYTHMATIC ●	
DEBATE ROOM	4.5	NS	Y	NEAR GROUND	NS	Y	NS		
GRAND CHESS ROOM	5.0	Y	N	GATHERING SPACE	NS	N	MULTIFUNCTIONAL		
BUILDER - WRECKER	5.0	Y	N	NS	Y	N	NS		
HEIRARCHICAL HETERARCHIAL	4.5	NS	N	NS	Y	N	NS		
MAZE ROOM	5.0	N	Y	ISOLATION	N	N	DESIGNED IN LEVELS		
EXPRESSION SPACE	4.0	Y	Y	NS	NS	N	NS		
PERFORMANCE SPACE	4.0	Y	Y	NS	NS	N	NS		
THEATRE	7.0	N	Y	NEAR GROUND	N	Y	NS		
REFLECTION CHAMBER	4.5	Y	Y	ISOLATION	Y	N	MULTIFUNCTIONAL		
THE WALL SPACE	5.0	Y	Y	NS	NS	N	ILLUSION OF HEIGHT		
PAINTING SPACE	4.5	NS	N	NS	Y	N	NS		
THE CONDUCTOR	5.0	N	N	AT HIGHER LEVEL	NS	N	NS		
MUSICAL MEDITATION	4.5	NS	Y	ISOLATION	NS	N	NS		
CHAMBER OF SILENCE	5.0	N	Y	ISOLATION	N	N	NS		
LABOUR SPACE	4.5	NS	N	PARTIAL OUTDOOR	Y	NA	NS		
CHAMBER OF LIGHT & SHADOW	5.0	Y	NS	GATHERING SPACE	Y	N	DAYLIGHT CAPTURE		
ABSTRACT ROOM	5.0	NS	N	NS	NS	N	NS		
PERSPECTIVE SPACE	4.5	Y	Y	NS	N	N	NS		
THE MEMORY VAULT	3.5	N	N	NS	NS	N	NS		
HALL OF VOICES	4.5	NS	Y	AT HIGHER LEVEL	NS	N	BLOCKING OF VISION		
LIGHT MODULATION	6.5	Y	N	AT HIGHER LEVEL	Y	N	DAYLIGHT CAPTURE		
THE CANVAS SPACE	5.0	NS	N	NS	NS	N	NS		
REVERSAL ROOM	5.0	Y	N	AT HIGHER LEVEL	Y	N	VIEWS FROM ALL SIDES		
CREATOR'S SQUARE	6.0	Y	N	CENTRAL SPACE	NS	Y	CENTRE OF STRUCTURE		
THE GRAND TERRARIUM	8.0	Y	N	GROUND LEVEL	NS	Y	MODULAR PLATES		



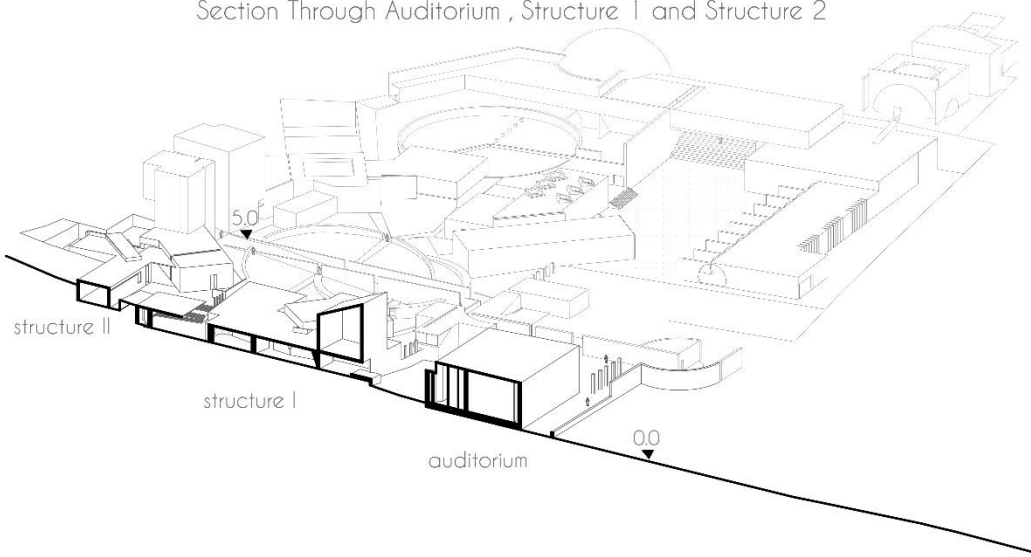




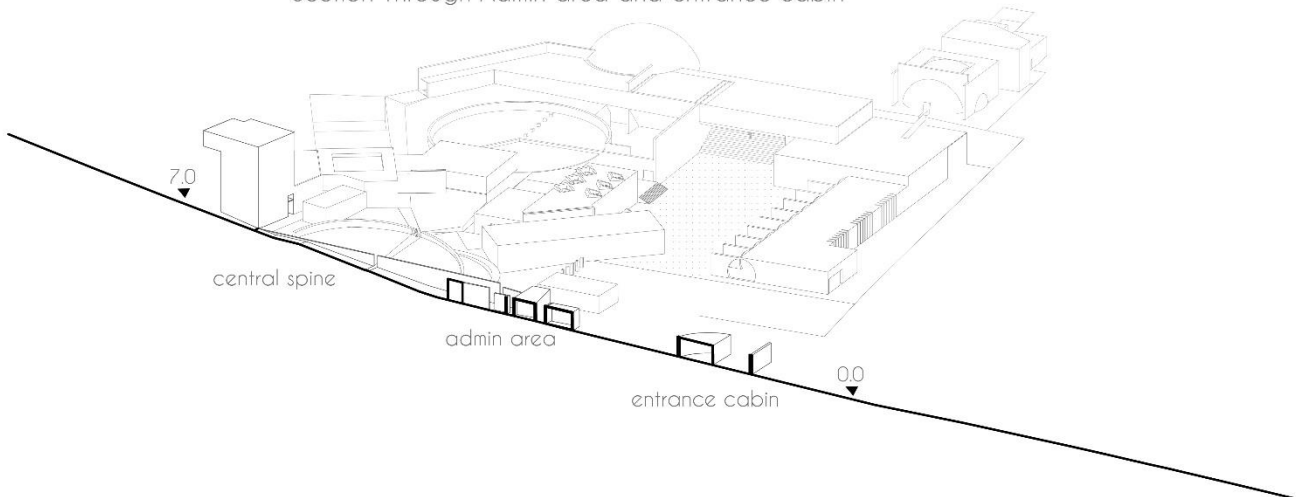


SITE SECTIONS

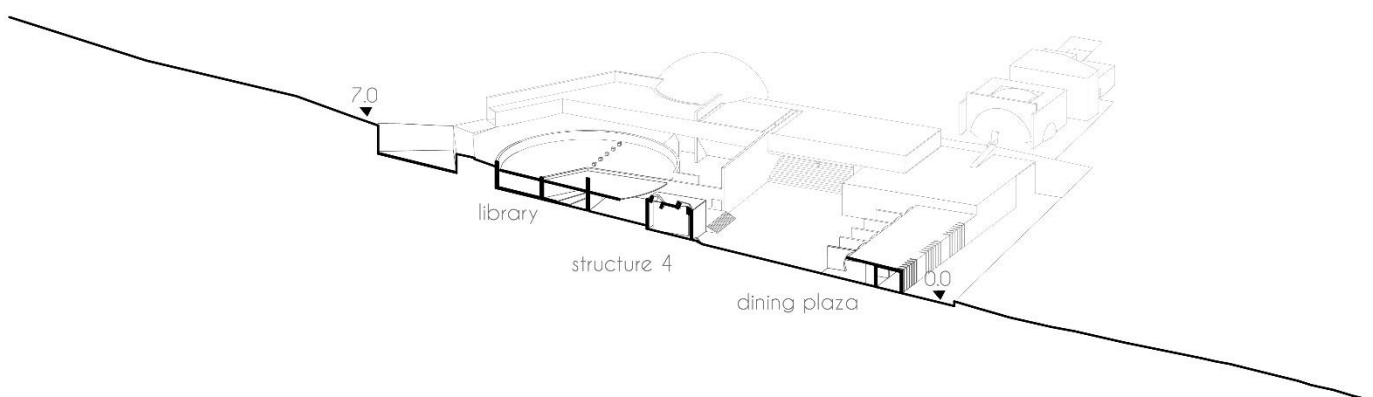
Section Through Auditorium, Structure 1 and Structure 2



Section Through Admin area and entrance cabin



Section Through Dining plaza, structure 4 and library

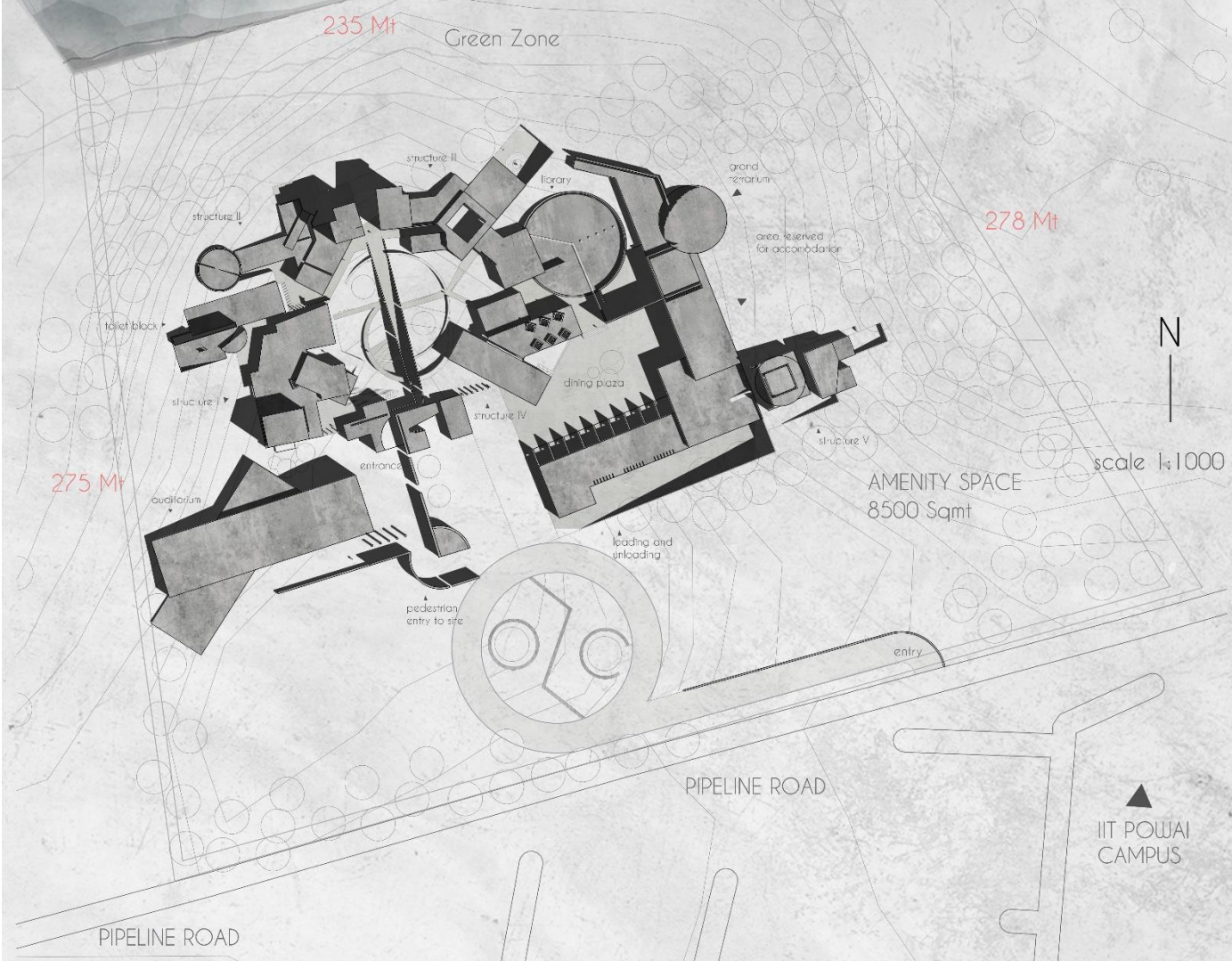


ROOF PLAN

VIHAR LAKE

To establish this innovation center as a major stream which it was necessary for it to gain the required attention, the IIT being one of the major platforms in our country, the project was designed inside the IIT Powai campus in Mumbai.

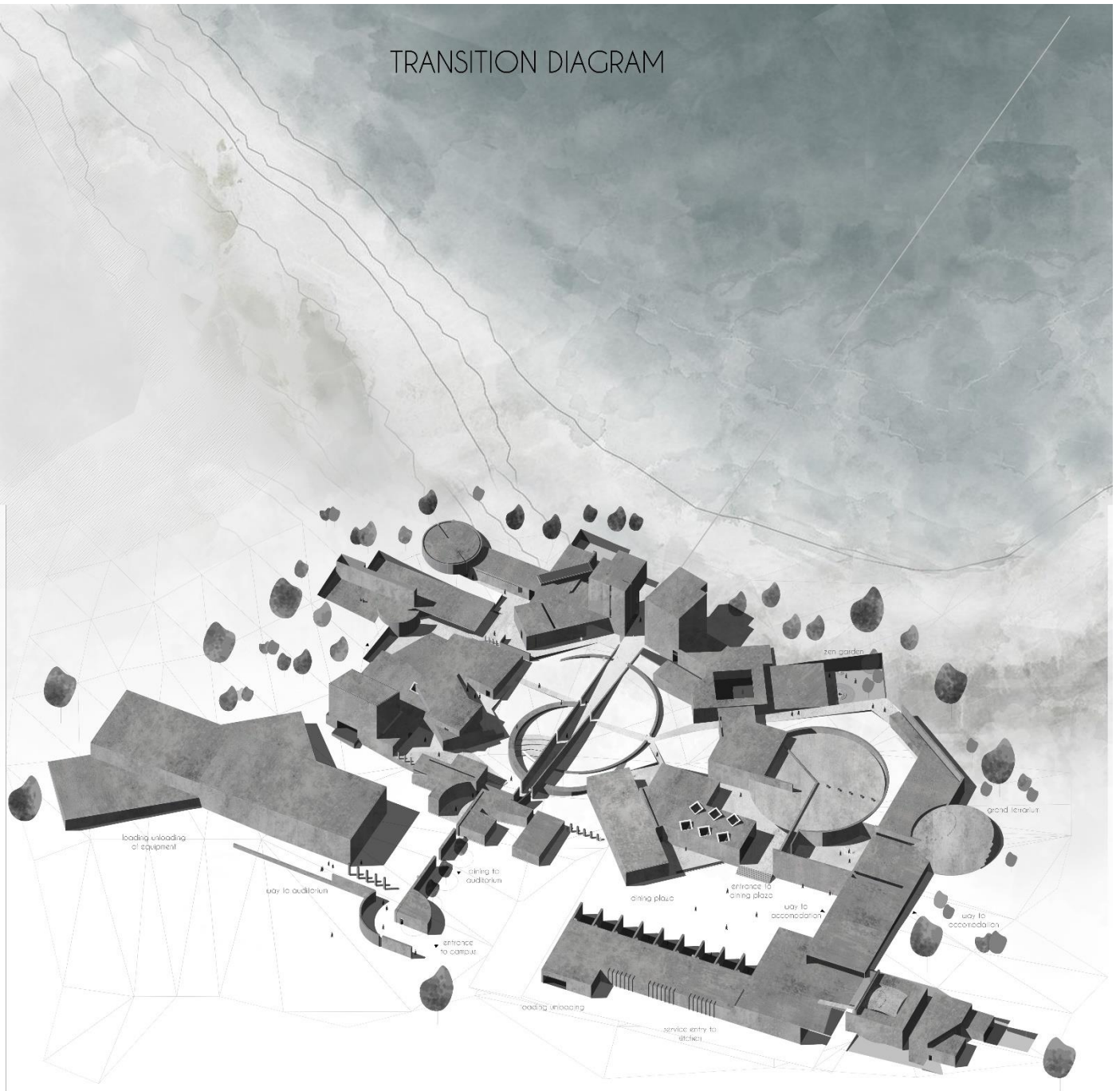
The Campus is situated to the northern side of the IIT campus and just below Vihar lake adjacent to the pipeline road.



The SPPU as well as the Shivaji University and the IIT have been conducting programs related to critical thinking as well as lateral thinking and innovation camps. The NEP 2020 also states that in the coming years every institute shall focus on the innovation aspect of their respective proficiency. But there is no innovation center for the mind where the process of thinking and the perspective of looking at things is reinvented. Therefore this project was formulated

POWAI LAKE

TRANSITION DIAGRAM

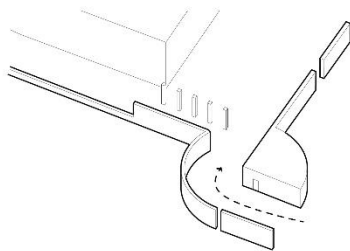


a security and administration booth is situated at the pedestrian entrance of the site. The pedestrian entry segregates into two paths, one leading to the admin area and the second one leading to the auditorium

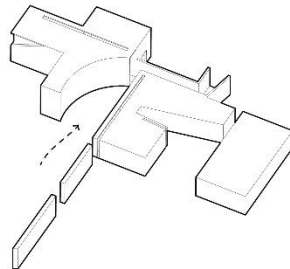
The main entrance to the campus is through the admin area. the geometry of the admin area hides the main entrance up to the point of arrival. the view of the central spine suddenly opens up as one enters the campus.

the central spine opens up as one enters the structure. The central spine leads to the highest point on the site and it frames the trinity. The elements being the sky, the earth and the man made buildings acting as the frame.

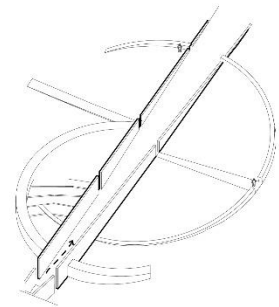
pedestrian entrance to the



entrance through admin area



central spine





AMENI
8500

- | | | | |
|------------------------------------------------------------------------------------------------|------------------------------------------------------------------------------------------------------------------------------|-----------------------------------------------------------------------------------------------------------------|-------------------------------------------------------------------------------------------|
|  water tanks |  electrical unit |  entry of wind into structure |  lifts |
|  water line |  wind flow into the site (venturi effect) |  artificial ventilation | |

